

# 740 BAY STREET

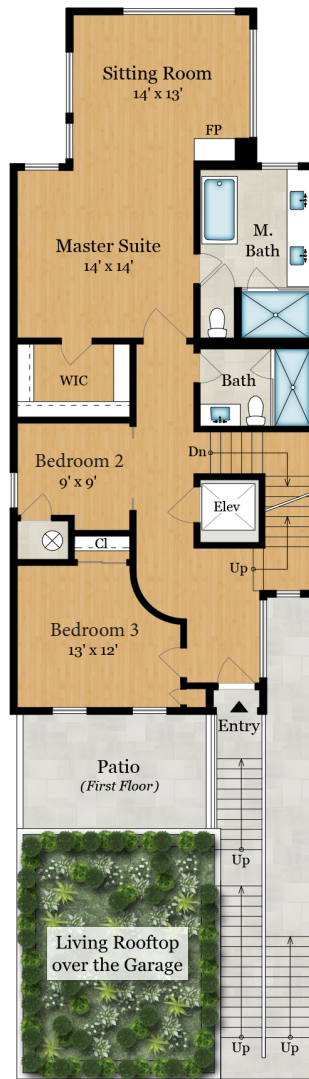
SAN FRANCISCO, CA 94109

Estimated Total Finished  
Square Footage: 3,535 SQ FT

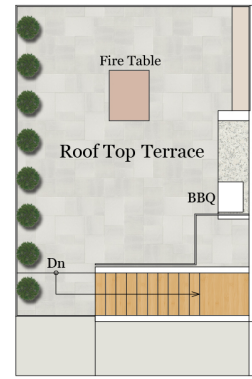
Plus 340 SQ FT 2-Car Garage on First Floor  
Calculated per ANSI Standard Z765-2003.



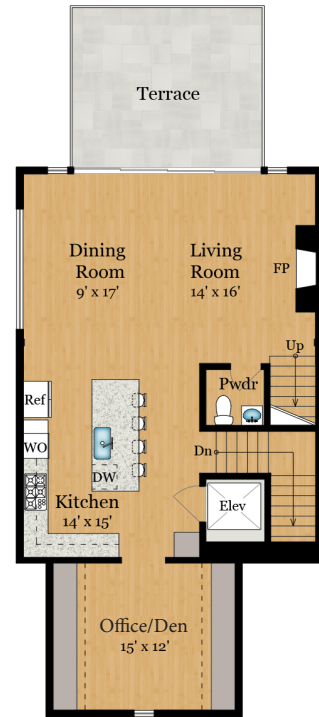
**FIRST FLOOR**  
1,315 SQ FT



**SECOND FLOOR**  
1,250 SQ FT



**ROOF LEVEL**  
410 SQ FT (Roof Terrace)  
60 SQ FT (Finished)



**THIRD FLOOR**  
910 SQ FT

Rachel Swann | 415.225.7743 rachel@vanguardsf.com lic #01860456

Tyler Mende | 415.875.7443 tyler@vanguardsf.com lic #01983578

Vanguard Properties believes this information to be correct but has not verified this information and assumes no legal responsibility for its accuracy. Buyers should investigate these issues to their own satisfaction.



2501 Mission Street  
San Francisco, CA 94110  
p 415.321.7000 f 415.321.7200  
[www.vanguardproperties.com](http://www.vanguardproperties.com)